



A COMPANY PROFILE OF
Bridge IT Support

Onsite | Cloud | Connectivity



Content

WELCOME

BRIEF HISTORY

FOOTPRINT

ACHIEVEMENTS

SERVICES

PARTNERS

BRANDS

CLIENTS

TESTIMONIALS

CONTACT US

Onsite | Cloud | Connectivity



WELCOME TO BRIDGE IT

END-TO-END SOLUTIONS TO MAXIMIZE YOUR COMPANY'S PRODUCTIVITY

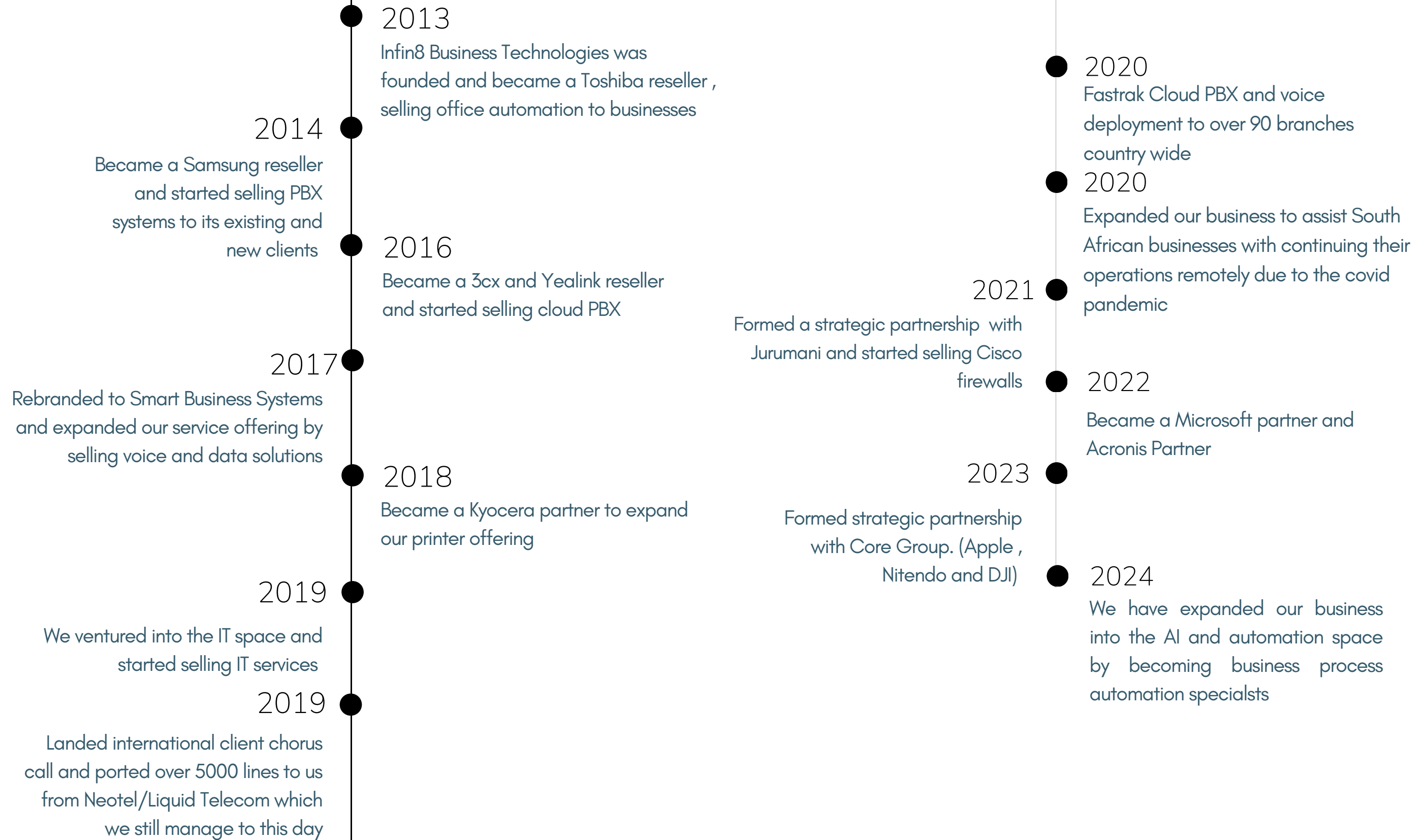
With over 10 years' experience in IT, we believe in offering a client a consolidated solution with one point of contact. Our ultimate goal is a long-term relationship with each of our customers.

Onsite | Cloud | Connectivity



2024

A BRIEF HISTORY OF Our Journey



Onsite | Cloud | Connectivity



Local & international footprint



Local footprint in all 9 provinces
International footprint – Africa , Asia, Europe

Onsite | Cloud | Connectivity



South Africa, Swaziland, Botswana
Zimbabwe, DRC, Rwanda, Zambia

Achievements

10k+

LINES DEPLOYED

500+

LOYAL CLIENTS

95%

CLIENT SATISFACTION

12 +

YEARS EXPERIENCE

Onsite | Cloud | Connectivity



Our Services



Multi-Functional Printers



Cloud PBX



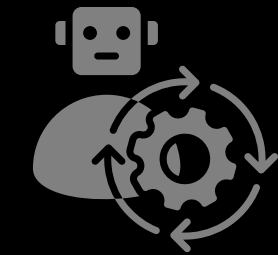
VoIP



Connectivity



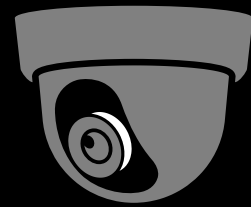
Firewalls



Business Process Automation



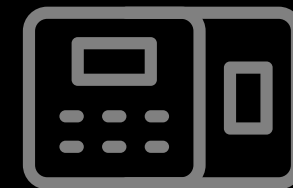
Cybersecurity



CCTV



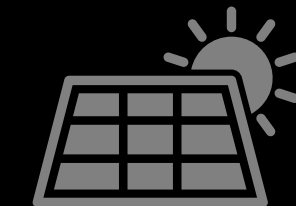
Access Control



Time and Attendance



Onsite and Remote IT Support



Solar and Backup Power

Onsite | Cloud | Connectivity



Multi-functional Printers (MFPs)

WE UNDERSTAND THE IMPORTANCE OF EFFICIENT DOCUMENT MANAGEMENT FOR MODERN BUSINESSES. OUR MULTI-FUNCTIONAL PRINTERS (MFPs) OFFER A COMPREHENSIVE SOLUTION FOR PRINTING, SCANNING, COPYING, AND FAXING, ALL IN ONE CONVENIENT DEVICE.

WITH ADVANCED FEATURES SUCH AS HIGH-SPEED PRINTING, DUPLEX PRINTING, AND NETWORK CONNECTIVITY, OUR MFPs STREAMLINE WORKFLOW AND ENHANCE PRODUCTIVITY IN ANY OFFICE ENVIRONMENT.

WHETHER YOU NEED COMPACT DESKTOP MODELS FOR SMALL TEAMS OR ROBUST ENTERPRISE-LEVEL DEVICES FOR LARGER ORGANIZATIONS, OUR RANGE OF MFPs IS DESIGNED TO MEET YOUR SPECIFIC PRINTING NEEDS.

BACKED BY RELIABLE SERVICE AND SUPPORT, SMART BUSINESS SYSTEMS ENSURES THAT YOUR PRINTING INFRASTRUCTURE OPERATES SEAMLESSLY, ALLOWING YOU TO FOCUS ON YOUR CORE BUSINESS OBJECTIVES.



RICOH  **KYOCERA**

Onsite | Cloud | Connectivity



Cloud PBX and VoIP Solutions with 3CX



BRIDGE IT OFFERS CUTTING-EDGE CLOUD PBX AND VOIP SOLUTIONS POWERED BY 3CX, A LEADING PROVIDER IN THE TELECOMMUNICATIONS INDUSTRY.

OUR CLOUD-BASED PHONE SYSTEMS LEVERAGE THE LATEST IN VOIP TECHNOLOGY TO DELIVER COST-EFFECTIVE, SCALABLE, AND FEATURE-RICH COMMUNICATION SOLUTIONS FOR BUSINESSES OF ALL SIZES.

WITH 3CX, ENJOY SEAMLESS INTEGRATION ACROSS DEVICES AND LOCATIONS, ENABLING REMOTE WORK AND ENHANCING COLLABORATION AMONG TEAM MEMBERS. BENEFIT FROM ADVANCED FEATURES SUCH AS AUTO-ATTENDANTS, CALL ROUTING, VOICEMAIL-TO-EMAIL, AND MORE, ALL MANAGED THROUGH AN INTUITIVE WEB-BASED INTERFACE.

WHETHER YOU'RE A SMALL STARTUP OR A LARGE ENTERPRISE, OUR CLOUD PBX AND VOIP SOLUTIONS EMPOWER YOU TO STREAMLINE COMMUNICATION, IMPROVE CUSTOMER SERVICE, AND BOOST EFFICIENCY. PLUS, WITH SMART BUSINESS SYSTEMS' DEDICATED SUPPORT AND EXPERTISE, YOU CAN TRUST THAT YOUR TELECOMMUNICATIONS INFRASTRUCTURE IS IN RELIABLE HANDS.



Onsite | Cloud | Connectivity



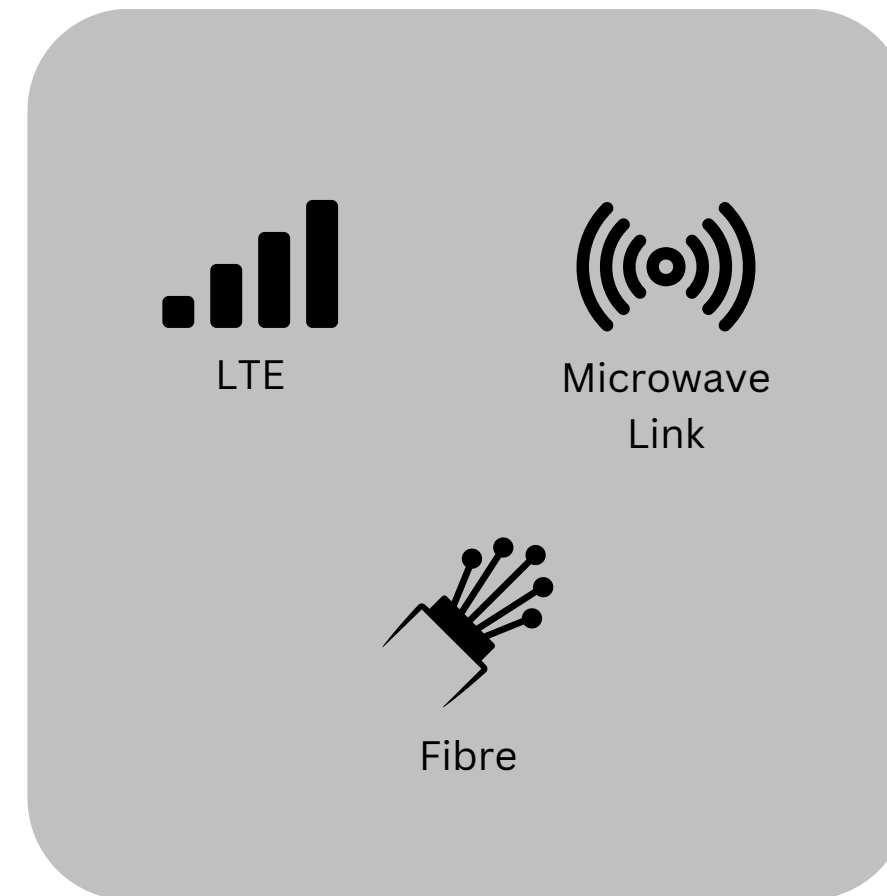
Connectivity

WE PROVIDE COMPREHENSIVE CONNECTIVITY SOLUTIONS TAILORED TO MEET THE EVOLVING NEEDS OF MODERN BUSINESSES. FROM HIGH-SPEED INTERNET ACCESS TO SECURE NETWORKING INFRASTRUCTURE, WE DELIVER RELIABLE CONNECTIVITY SOLUTIONS THAT KEEP YOUR BUSINESS CONNECTED AND PRODUCTIVE.

OUR RANGE OF CONNECTIVITY SERVICES INCLUDES:

- **INTERNET ACCESS:** ACCESS HIGH-SPEED INTERNET CONNECTIVITY TAILORED TO YOUR BUSINESS REQUIREMENTS, ENSURING SEAMLESS ONLINE OPERATIONS AND COMMUNICATION.
- **NETWORKING SOLUTIONS:** BUILD ROBUST AND SECURE NETWORKING INFRASTRUCTURE TO FACILITATE DATA SHARING, COLLABORATION, AND RESOURCE ACCESS ACROSS YOUR ORGANIZATION.
- **WIRELESS SOLUTIONS:** IMPLEMENT SCALABLE AND SECURE WIRELESS NETWORKS TO SUPPORT MOBILITY AND ENABLE FLEXIBLE WORK ENVIRONMENTS.
- **FIBER OPTIC SOLUTIONS:** HARNESS THE POWER OF FIBER OPTIC TECHNOLOGY FOR ULTRA-FAST AND RELIABLE DATA TRANSMISSION, ENSURING OPTIMAL PERFORMANCE FOR YOUR BUSINESS-CRITICAL APPLICATIONS.

WITH SMART BUSINESS SYSTEMS AS YOUR CONNECTIVITY PARTNER, YOU CAN COUNT ON CUTTING-EDGE TECHNOLOGY, RELIABLE PERFORMANCE, AND DEDICATED SUPPORT TO KEEP YOUR BUSINESS CONNECTED AND THRIVING.



Onsite | Cloud | Connectivity



Frogfoot
Just connect

MetroFibre



COMSOL
CONNECTED. WITHOUT LIMITS.

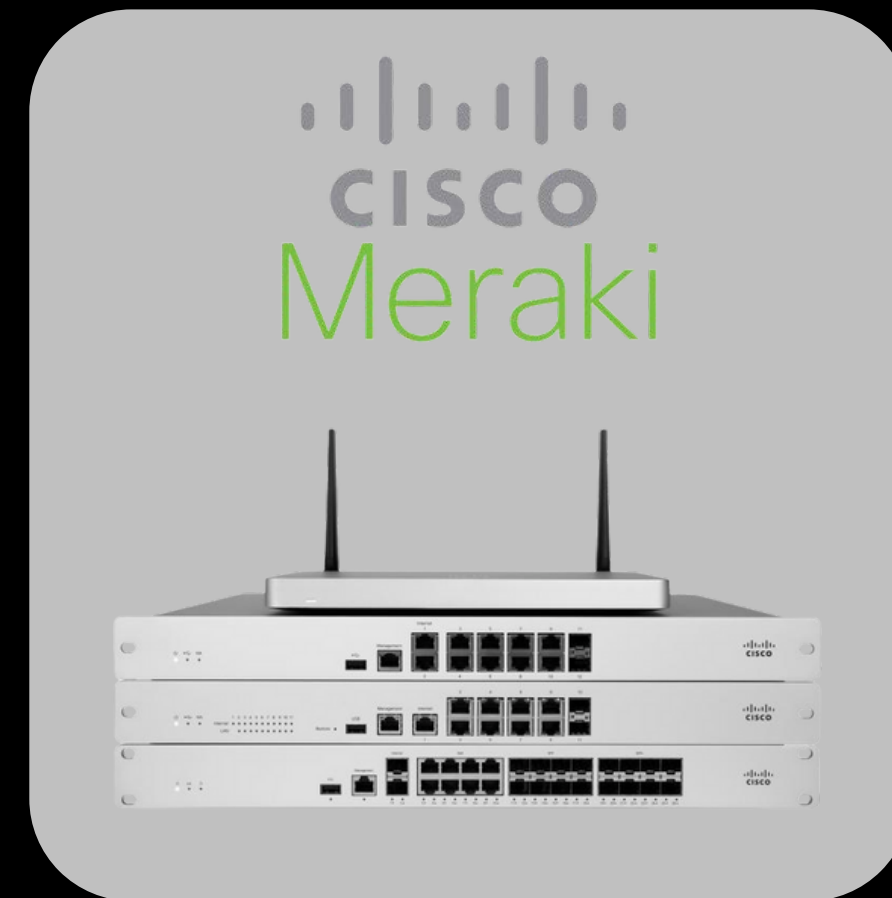
Firewall / Network Security Solutions

BRIDGE IT OFFERS ROBUST FIREWALL SOLUTIONS POWERED BY CISCO MERAKI, A TRUSTED LEADER IN NETWORK SECURITY. OUR FIREWALL SOLUTIONS PROVIDE ADVANCED PROTECTION AGAINST CYBER THREATS, ENSURING THE SECURITY AND INTEGRITY OF YOUR NETWORK INFRASTRUCTURE.

WITH CISCO MERAKI FIREWALLS, ENJOY COMPREHENSIVE SECURITY FEATURES SUCH AS:

- **NEXT-GENERATION FIREWALL (NGFW) CAPABILITIES:** DEFEND AGAINST SOPHISTICATED THREATS WITH ADVANCED FIREWALL CAPABILITIES, INCLUDING INTRUSION PREVENTION, CONTENT FILTERING, AND MALWARE PROTECTION.
- **CLOUD-BASED MANAGEMENT:** SIMPLIFY FIREWALL DEPLOYMENT AND MANAGEMENT WITH CENTRALIZED, CLOUD-BASED ADMINISTRATION, ALLOWING FOR EASY CONFIGURATION AND MONITORING ACROSS YOUR NETWORK.
- **SECURE REMOTE ACCESS:** ENABLE SECURE REMOTE ACCESS FOR EMPLOYEES WORKING FROM ANYWHERE, ENSURING THAT YOUR NETWORK REMAINS PROTECTED EVEN OUTSIDE THE OFFICE.
- **INTEGRATED SECURITY SERVICES:** SEAMLESSLY INTEGRATE ADDITIONAL SECURITY SERVICES SUCH AS VPN, THREAT INTELLIGENCE, AND APPLICATION CONTROL TO ENHANCE YOUR NETWORK'S SECURITY POSTURE.

PARTNERING WITH SMART BUSINESS SYSTEMS FOR YOUR FIREWALL NEEDS MEANS LEVERAGING THE POWER OF CISCO MERAKI'S CUTTING-EDGE TECHNOLOGY, BACKED BY OUR EXPERTISE AND DEDICATED SUPPORT.



Onsite | Cloud | Connectivity



CCTV Solutions

BRIDGE IT OFFERS COMPREHENSIVE CLOSED-CIRCUIT TELEVISION (CCTV) SOLUTIONS TAILORED TO MEET THE SECURITY NEEDS OF BUSINESSES OF ALL SIZES. OUR CCTV SYSTEMS PROVIDE RELIABLE SURVEILLANCE AND MONITORING CAPABILITIES, ENABLING YOU TO PROTECT YOUR ASSETS, PREMISES, AND PERSONNEL EFFECTIVELY.

KEY FEATURES OF OUR CCTV SOLUTIONS INCLUDE:

- **HIGH-QUALITY VIDEO SURVEILLANCE:** UTILIZE HIGH-RESOLUTION CAMERAS AND ADVANCED RECORDING TECHNOLOGIES TO CAPTURE CLEAR AND DETAILED FOOTAGE OF YOUR PREMISES.
- **REMOTE MONITORING:** ACCESS LIVE VIDEO FEEDS AND RECORDINGS REMOTELY VIA WEB OR MOBILE DEVICES, GIVING YOU PEACE OF MIND AND THE ABILITY TO MONITOR YOUR PROPERTY FROM ANYWHERE, AT ANY TIME.
- **MOTION DETECTION AND ALERTS:** RECEIVE REAL-TIME ALERTS AND NOTIFICATIONS WHEN MOTION IS DETECTED, ALLOWING FOR IMMEDIATE RESPONSE TO POTENTIAL SECURITY THREATS.
- **SCALABILITY AND FLEXIBILITY:** OUR CCTV SYSTEMS ARE SCALABLE AND ADAPTABLE TO ACCOMMODATE THE EVOLVING NEEDS OF YOUR BUSINESS, WHETHER YOU HAVE A SINGLE LOCATION OR MULTIPLE SITES.
- **INTEGRATION WITH ACCESS CONTROL:** SEAMLESSLY INTEGRATE CCTV WITH ACCESS CONTROL SYSTEMS TO ENHANCE SECURITY AND CONTROL ACCESS TO RESTRICTED AREAS.

WITH SMART BUSINESS SYSTEMS AS YOUR CCTV PARTNER, YOU CAN TRUST IN OUR EXPERTISE TO DESIGN, INSTALL, AND MAINTAIN A TAILORED SURVEILLANCE SOLUTION THAT MEETS YOUR SECURITY REQUIREMENTS AND HELPS SAFEGUARD YOUR BUSINESS.



Onsite | Cloud | Connectivity



Access Control Solutions

BRIDGE IT PROVIDES CUTTING-EDGE ACCESS CONTROL SOLUTIONS DESIGNED TO ENHANCE THE SECURITY AND EFFICIENCY OF YOUR BUSINESS OPERATIONS. OUR ACCESS CONTROL SYSTEMS OFFER ADVANCED FEATURES TO MANAGE AND CONTROL ACCESS TO YOUR PREMISES, ENSURING ONLY AUTHORIZED PERSONNEL CAN ENTER DESIGNATED AREAS.

KEY FEATURES OF OUR ACCESS CONTROL SOLUTIONS INCLUDE:

- **BIOMETRIC IDENTIFICATION:** UTILIZE BIOMETRIC TECHNOLOGIES SUCH AS FINGERPRINT OR FACIAL RECOGNITION FOR SECURE AND RELIABLE IDENTIFICATION OF INDIVIDUALS.
- **PROXIMITY CARD READERS:** ENABLE SEAMLESS ACCESS WITH PROXIMITY CARD READERS THAT ALLOW AUTHORIZED PERSONNEL TO GAIN ENTRY USING RFID OR SMART CARDS.
- **CUSTOMIZABLE ACCESS LEVELS:** DEFINE AND CUSTOMIZE ACCESS LEVELS BASED ON ROLES AND RESPONSIBILITIES, ENSURING THAT EACH INDIVIDUAL HAS APPROPRIATE ACCESS PERMISSIONS.
- **AUDIT TRAIL AND REPORTING:** MAINTAIN A DETAILED AUDIT TRAIL OF ACCESS EVENTS AND GENERATE REPORTS TO TRACK EMPLOYEE MOVEMENT AND MONITOR SECURITY INCIDENTS.
- **INTEGRATION WITH CCTV:** INTEGRATE ACCESS CONTROL SYSTEMS WITH CCTV SURVEILLANCE TO ENHANCE SECURITY MONITORING AND RESPONSE CAPABILITIES.
- **REMOTE ACCESS MANAGEMENT:** MANAGE ACCESS PERMISSIONS REMOTELY VIA WEB OR MOBILE APPLICATIONS, ENABLING CONVENIENT ADMINISTRATION FROM ANYWHERE, AT ANY TIME.

WITH SMART BUSINESS SYSTEMS AS YOUR ACCESS CONTROL PARTNER, YOU CAN RELY ON OUR EXPERTISE TO IMPLEMENT A COMPREHENSIVE SOLUTION THAT MEETS YOUR SECURITY REQUIREMENTS AND SAFEGUARDS YOUR ASSETS AND PERSONNEL EFFECTIVELY.



Onsite | Cloud | Connectivity



Time and Attendance Solutions

BRIDGE IT OFFERS COMPREHENSIVE TIME AND ATTENDANCE SOLUTIONS DESIGNED TO STREAMLINE WORKFORCE MANAGEMENT AND ENHANCE PRODUCTIVITY. OUR TIME AND ATTENDANCE SYSTEMS PROVIDE ACCURATE AND EFFICIENT TRACKING OF EMPLOYEE ATTENDANCE, HELPING YOU TO EFFECTIVELY MANAGE LABOR COSTS AND OPTIMIZE RESOURCE ALLOCATION.

KEY FEATURES OF OUR TIME AND ATTENDANCE SOLUTIONS INCLUDE:

- **BIOMETRIC TIME CLOCKS:** UTILIZE BIOMETRIC TECHNOLOGIES SUCH AS FINGERPRINT OR FACIAL RECOGNITION FOR SECURE AND RELIABLE EMPLOYEE TIME TRACKING.
- **MOBILE TIME TRACKING:** ENABLE EMPLOYEES TO CLOCK IN AND OUT USING THEIR MOBILE DEVICES, PROVIDING FLEXIBILITY AND CONVENIENCE FOR REMOTE OR FIELD-BASED WORKERS.
- **SHIFT SCHEDULING:** CREATE AND MANAGE EMPLOYEE SCHEDULES EFFICIENTLY, ENSURING ADEQUATE COVERAGE AND COMPLIANCE WITH LABOR REGULATIONS.
- **OVERTIME MANAGEMENT:** MONITOR AND CONTROL OVERTIME HOURS TO MINIMIZE COSTS AND MAINTAIN COMPLIANCE WITH LABOR LAWS.
- **ABSENCE MANAGEMENT:** TRACK AND MANAGE EMPLOYEE ABSENCES, INCLUDING SICK LEAVE, VACATION TIME, AND OTHER TYPES OF LEAVE.
- **INTEGRATION WITH PAYROLL:** SEAMLESSLY INTEGRATE TIME AND ATTENDANCE DATA WITH PAYROLL SYSTEMS FOR ACCURATE AND EFFICIENT PAYROLL PROCESSING.

WITH SMART BUSINESS SYSTEMS AS YOUR TIME AND ATTENDANCE PARTNER, YOU CAN RELY ON OUR EXPERTISE TO IMPLEMENT A TAILORED SOLUTION THAT MEETS YOUR ORGANIZATION'S SPECIFIC NEEDS AND HELPS YOU EFFECTIVELY MANAGE YOUR WORKFORCE.



Onsite | Cloud | Connectivity



IT Services

BRIDGE IT SUPPORT OFFERS COMPREHENSIVE IT SERVICES TAILORED TO MEET THE DIVERSE NEEDS OF BUSINESSES IN TODAY'S DIGITAL LANDSCAPE. WHETHER YOU REQUIRE ONSITE ASSISTANCE OR REMOTE SUPPORT, OUR TEAM OF EXPERIENCED IT PROFESSIONALS IS DEDICATED TO DELIVERING RELIABLE SOLUTIONS THAT EMPOWER YOUR BUSINESS TO THRIVE.

ONSITE AND REMOTE IT SUPPORT:

- **ONSITE ASSISTANCE:** OUR SKILLED TECHNICIANS ARE AVAILABLE TO PROVIDE HANDS-ON SUPPORT AND TROUBLESHOOTING FOR HARDWARE, SOFTWARE, AND NETWORK ISSUES, ENSURING MINIMAL DISRUPTION TO YOUR OPERATIONS.
- **REMOTE SUPPORT:** UTILIZE OUR REMOTE IT SUPPORT SERVICES TO RECEIVE TIMELY ASSISTANCE AND RESOLUTION FOR TECHNICAL CHALLENGES, MAXIMIZING UPTIME AND PRODUCTIVITY FOR YOUR BUSINESS.



Acronis

Onsite | Cloud | Connectivity



Business Process Automation

WITH BRIDGE IT AS YOUR BUSINESS PROCESS AUTOMATION PARTNER, YOU CAN TRUST IN OUR COMMITMENT TO DELIVERING SCALABLE, COST-EFFECTIVE SOLUTIONS THAT ENABLE YOU TO FOCUS ON WHAT MATTERS MOST—GROWING YOUR BUSINESS.

- **STREAMLINED WORKFLOWS:** LEVERAGE OUR EXPERTISE IN BUSINESS PROCESS AUTOMATION TO OPTIMIZE AND AUTOMATE REPETITIVE TASKS, STREAMLINE WORKFLOWS, AND IMPROVE OPERATIONAL EFFICIENCY ACROSS YOUR ORGANIZATION.
- **CUSTOM SOLUTIONS:** WE DEVELOP TAILORED AUTOMATION SOLUTIONS THAT ALIGN WITH YOUR UNIQUE BUSINESS PROCESSES AND OBJECTIVES, LEVERAGING CUTTING-EDGE TECHNOLOGIES TO DRIVE INNOVATION AND GROWTH.
- **INTEGRATION WITH EXISTING SYSTEMS:** SEAMLESSLY INTEGRATE AUTOMATION SOLUTIONS WITH YOUR EXISTING IT INFRASTRUCTURE AND SOFTWARE APPLICATIONS, ENHANCING CONNECTIVITY AND INTEROPERABILITY.



Onsite | Cloud | Connectivity



Solar and Backup Power Solutions

- BRIDGE IT SUPPORT OFFERS SYSTEMS OFFERS INNOVATIVE SOLAR AND BACKUP POWER SOLUTIONS TO MEET THE ENERGY NEEDS OF BUSINESSES SEEKING SUSTAINABLE AND RELIABLE POWER SOURCES. WHETHER YOU'RE LOOKING TO REDUCE YOUR CARBON FOOTPRINT, INCREASE ENERGY INDEPENDENCE, OR SAFEGUARD AGAINST POWER OUTAGES, OUR COMPREHENSIVE SOLUTIONS PROVIDE THE RESILIENCE AND EFFICIENCY YOU NEED TO KEEP YOUR OPERATIONS RUNNING SMOOTHLY.
- SOLAR POWER SOLUTIONS:
- RENEWABLE ENERGY: HARNESS THE POWER OF THE SUN WITH OUR SOLAR ENERGY SOLUTIONS, REDUCING YOUR RELIANCE ON TRADITIONAL GRID ELECTRICITY AND LOWERING YOUR ENERGY COSTS.
- CUSTOMIZED DESIGNS: OUR TEAM OF EXPERTS DESIGNS TAILORED SOLAR SYSTEMS TO MATCH YOUR ENERGY REQUIREMENTS AND SITE CONDITIONS, MAXIMIZING ENERGY PRODUCTION AND RETURN ON INVESTMENT.
- GRID-TIED AND OFF-GRID SYSTEMS: CHOOSE FROM GRID-TIED SYSTEMS TO OFFSET YOUR ENERGY CONSUMPTION OR OFF-GRID SOLUTIONS FOR REMOTE LOCATIONS OR AREAS WITH UNRELIABLE GRID ACCESS.
- BACKUP POWER SOLUTIONS:
- UNINTERRUPTED POWER SUPPLY: ENSURE CONTINUITY OF OPERATIONS WITH OUR BACKUP POWER SOLUTIONS, PROVIDING RELIABLE POWER BACKUP DURING GRID FAILURES OR EMERGENCIES.
- BATTERY STORAGE SOLUTIONS: INTEGRATE BATTERY STORAGE SYSTEMS WITH YOUR SOLAR OR TRADITIONAL POWER SOURCES TO STORE EXCESS ENERGY AND USE IT DURING PEAK DEMAND OR POWER OUTAGES.
- AUTOMATIC TRANSFER SWITCHES: OUR SOLUTIONS INCLUDE AUTOMATIC TRANSFER SWITCHES TO SEAMLESSLY SWITCH BETWEEN GRID AND BACKUP POWER SOURCES, MINIMIZING DOWNTIME AND DISRUPTIONS.
- WITH SMART BUSINESS SYSTEMS AS YOUR SOLAR AND BACKUP POWER PARTNER, YOU CAN RELY ON OUR EXPERTISE TO DELIVER SUSTAINABLE, RESILIENT, AND COST-EFFECTIVE SOLUTIONS THAT MEET YOUR ENERGY NEEDS AND SUPPORT YOUR BUSINESS GROWTH.



Onsite | Cloud | Connectivity



01. CONSULTATION

An Introduction to Bridge IT and Tailored advice to align technology with your business objectives for optimal efficiency and growth.

02. NEEDS ANALYSIS

In-depth assessment to identify challenges and customize solutions for seamless integration.

03. SOLUTION

We present a clear and concise proposal outlining innovative strategies tailored to your specific requirements.

04. IMPLEMENTATION

Expert execution of chosen solutions with minimal disruption, ensuring swift deployment and maximum effectiveness.

05. ON-GOING SUPPORT

Dedicated assistance and proactive maintenance to sustain peak performance and adapt to evolving needs.

Working Process

Onsite | Cloud | Connectivity



Our Partners.



Onsite | Cloud | Connectivity



Some of the brands we work with.



Onsite | Cloud | Connectivity



Some of our Clients.



From Our Clients

Bridge IT have kept us up to date with industry standard systems and gave us the guarantee to improve our existing system infrastructure. The company is punctual and professional in their approach to customer service, they are always a phone call away. Bridge IT is trustworthy and will help you build your business.

Hanselm J

The overall service I received was unmatched, specifically the professionalism in which the team at Bridge IT Support Systems delivered their solution and completed a thorough analysis of my business requirements. I would highly recommend any business, large or small to allow Bridge IT Support to offer their services.

Mohamed K.


Onsite | Cloud | Connectivity



Contact us




 info@bridgeitsupport.co

 087 152 0337

 www.bridgeitsupport.co

 [info@bridgeitsupport](#)

 359 Surrey Ave, Ferndale
Randburg, Johannesburg, 2194

Onsite | Cloud | Connectivity

